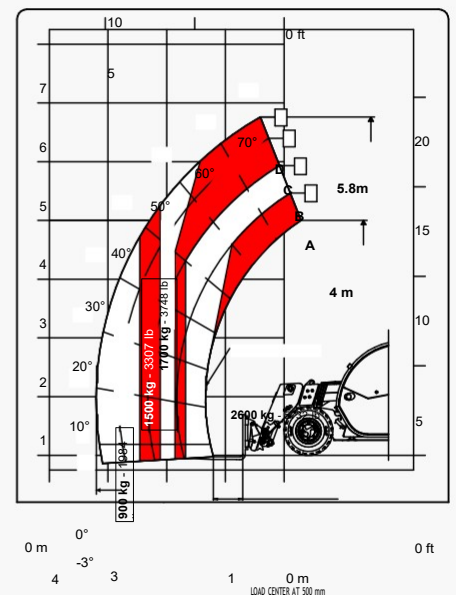
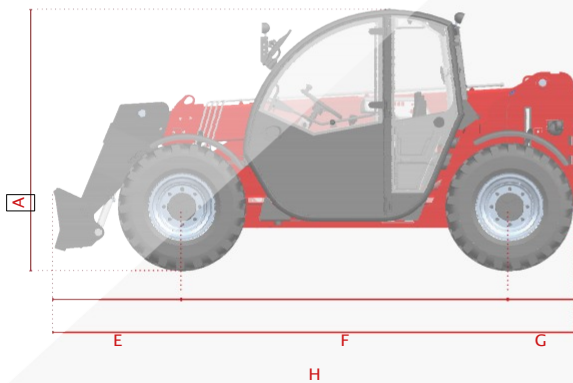


FISA TEHNICA

6.26 GAMA MICA



FARESIN.COM

in f

6.26 GAMA MICA

SPECIFICATII TEHNICE

MODEL	6.26
CONFIGURATIE	CLASSIC 52

DIMENSIUNI

[A] INALTIME	mm	1935
[B] LATIME	mm	1890
[C] ECARTAMENT	mm	1550
[D] GARDA LA SOL	mm	220
[E] CONSOLA FATA	mm	990
[F] AMPATAMENT	mm	2525
[G] CONSOLA SPATE	mm	520
[H] LUNGIME FARA CARLIG DE REMORCARE	mm	4035
[I] LATIME CABINA	mm	960

GREUTATE

Classic 52	kg	4700
------------	----	------

DETALII

NUMAR SECTIUNI BRAT	nr	1
CAPACITATE MAXIMA RIDICARE	kg	2600
INALTIME MAXIMA RIDICARE	m	5,9
EXTENSIE MAXIMA A BRATULUI	m	3,2
EXTENSIE MAXIMA A BRATULUI LA INALTIME MAXIMA	m	0,3
UNGHII DE BASCULARE	°	155

CAPACITATI REZERVOARE

ULEI HIDRAULIC	l	80
COMBUSTIBIL	l	70

CADRU IMPLEMENT

FH	●
EURO	○

TRANSMISIE

HIDROSTATICA		monogama
VITEZA MAXIMA	km/h	30

MOTOR STAGIUL V

MARCA MOTOR		Yanmar
PUTERE	kW/hp	51,7/69,3
SISTEM CATALIZARE		DOC + DPF
FORTA DE TRACTARE LA BARA	daN	3530

SISTEM HIDRAULIC

MODEL POMPA		rotativa
DEBIT HIDRAULIC/PRESIUNE	l/bar	80/230

ANVELOPE

12-16,5	●	
12,5-18	○	
435/50 19.5	○	
RAZA DE BRACARE	m	3,25

ALTELE

JOYSTICK	●	mecanic-electroproportional
CUPLARE RAPIDA	○	
CONEXIUNE HIDRAULICA POSTERIOARA DUBLA CU CONTROL ELECTRO-PROPORTIONAL	○	
LUMINI FATA/SPATE LED	○	
CONEXIUNE ELECTRICA SPATE	○	
CARLIG FIX DE TRACTARE 6 T	○	
PREINCALZIRE BLOC MOTOR	○	
AER CONDITIONAT	○	
BRAT FLOTANT	○	
SUSPENSIE BRAT	○	
DIVERTER MANUAL CU 6 CANALE	○	
PEB (CUPLA ELECTRICA BRAT)	○	
SUPER-REDUCTOR	○	
MOTOR HIDRAULIC	○	
MOD CUPA	●	

NOTA: Dimensiunile sunt valabile pe anvelope 12-16,5

● Standard ○ Optional - Not available

